

U N I T E D W E

MASK

Hand-Sewn Mask Version
Demo



MASK MAKING TIPS

RECOMMENDED MATERIALS

FABRIC

- Cotton
- Cotton-flannel
- Batik quilting

FILTERS

- Coffee
- Vacuum Lining
- Paper Towels
- Fabric

STRAPS

- Ribbon
- Elastic
- Bias tape
- Yarn + craft beads, rubber stoppers
- Fabric - jersey, knit, swimwear

NOSE WRAP

- Pipe cleaner



DIY KITS AVAILABLE!

- Fabric swatch
- Sewing needles
- Thread
- Elastic, ribbon
- Personalized elements

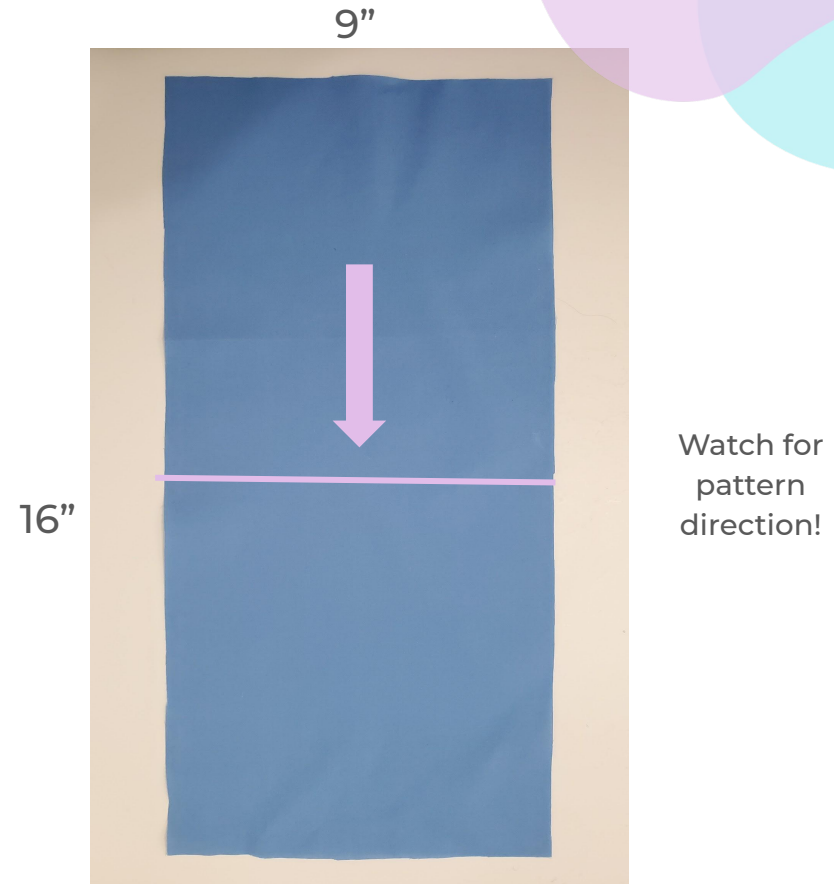
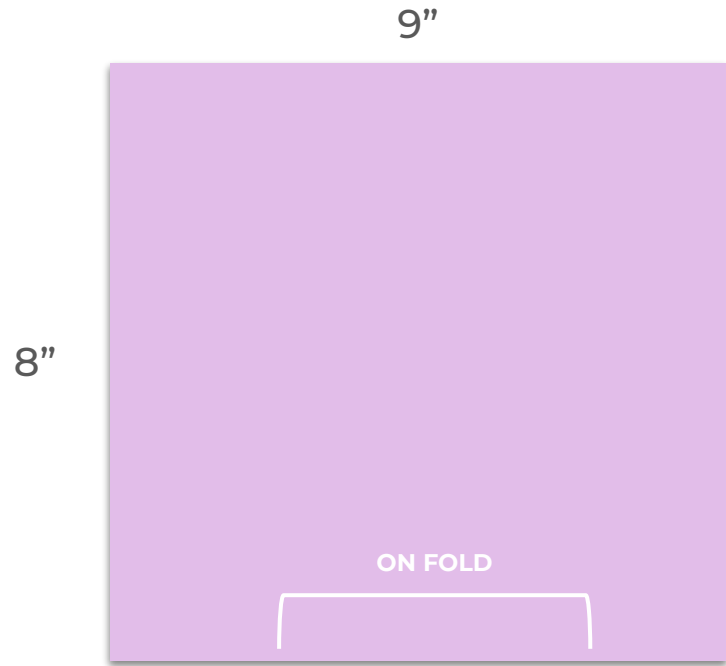
HAND SEWN MASK



- Sewing pins
- Fabric scissors
- Craft beads (x2)
- Measuring tape
- 16" elastic (x2)
- 9" x 16" fabric

*Substitutes – stapler + staples, iron/ towel, ribbon (2x) 40", shoelaces, safety pins, ruler, lighter or nail polish

HAND SEWN MASK



HAND SEWN MASK

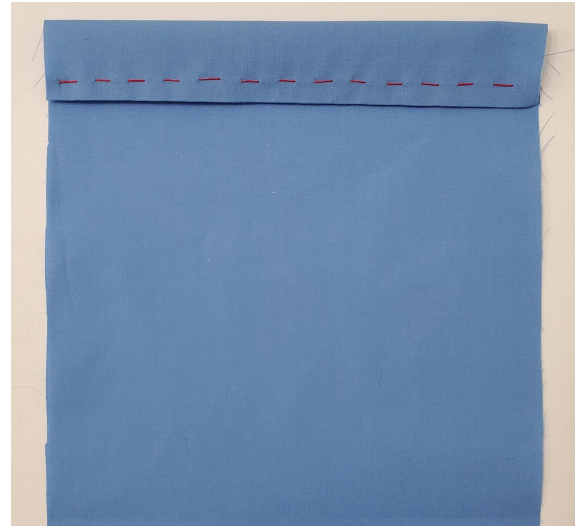
STEP 1

Fold 0.25" in on both short sides (iron or pin), creating a hem on both sides



STEP 2

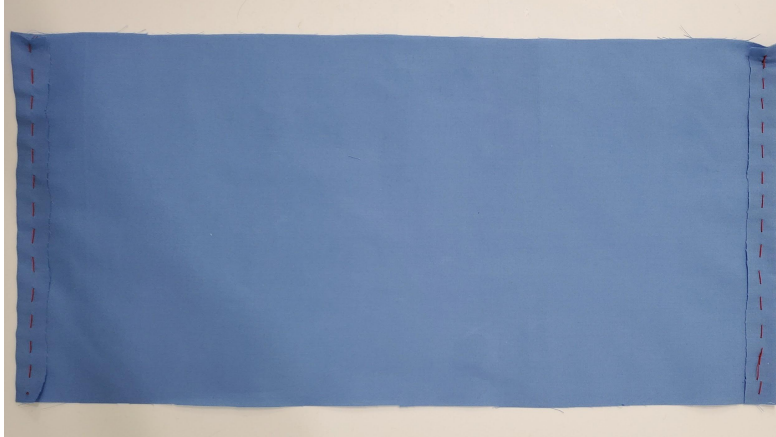
Cut at least 32 inches of thread, knot the bottom, and hand stitch edges on both hems (with a running stitch – down, up, down up)



HAND SEWN MASK

STEP 2

Cut at least 32 inches of thread, knot the bottom, and hand stitch edges on both hems (with a running stitch – down, up, down up)



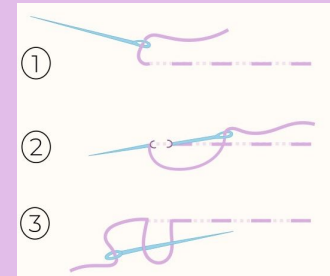
SEWING TIPS!

*shorter the stitches = stronger the hem

*don't pull too hard to avoid gathering

*try several stitches at once!

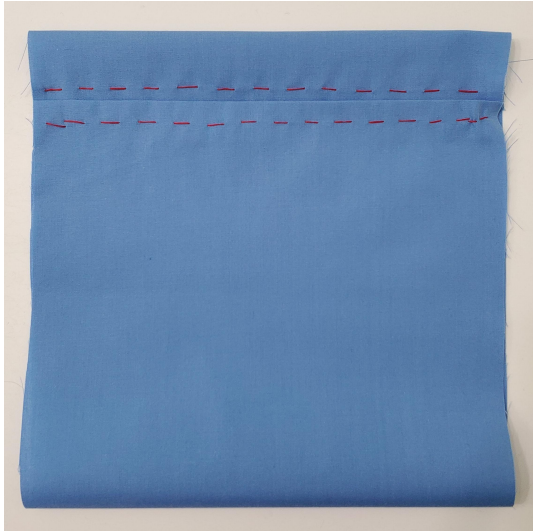
*to finish: make small stitch backwards and place the needle through the loop. Do this 2x.



HAND SEWN MASK

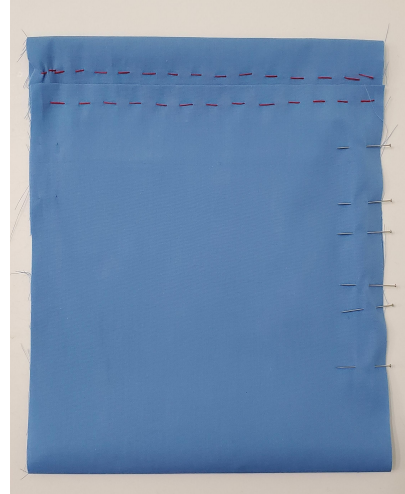
STEP 3

Take one short end and fold in **1 in.** Take the other short end to meet and slightly overlap the edges.



STEP 4

Place pins at **2", 3", 3.5", 4.5", 5", 6"**
Begin pleating by having the bottom pin meet the adjacent pin moving toward the mouth pocket. Pin pleats in to place.



HAND SEWN MASK

STEP 5

Place elastic or ribbon on both sides of mask. Fold over ends by **0.5 ins** and stitch. Stitches must be small!



SEWING TIPS!

*use smaller stitches to catch the pleats. Make sure to catch the entire fold/pleat of fabric.

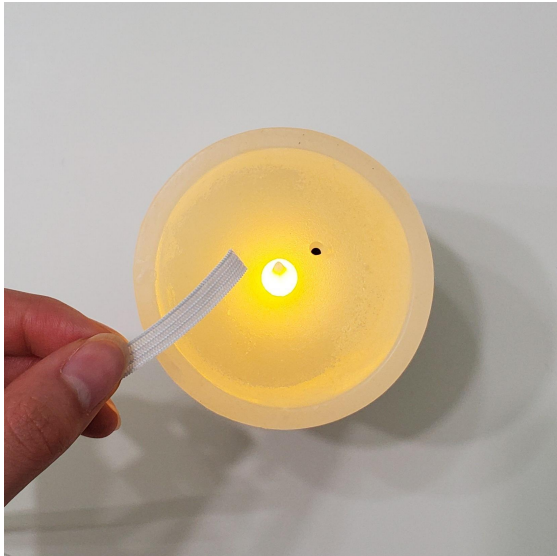
*mask should measure to about 3.5" – 4" in height

HAND SEWN MASK

STEP 6

Burn edges of elastic, ribbon quickly.

*alternative – use clear nail polish!



STEP 7

One mask does not fit all!

If using elastic, thread through a craft bead or tie knots (regular or fish) on both sides.



HAND SEWN MASK

STEP 8

Flaunt it!

Make sure the mask covers your nose and mouth.



CARING FOR YOUR MASK!

- ✓ Clean nightly – hand wash OR wash/ dry (in delicate bag)
- ✓ Iron as needed
- ✓ Make, share, and educate your friends, family, and community.

Stay Safe!

Thank you

www.unitedwemask.org

✉ jj@unitedwemask.org

📷 [@unitedwemaskofficial](https://www.instagram.com/unitedwemaskofficial)

